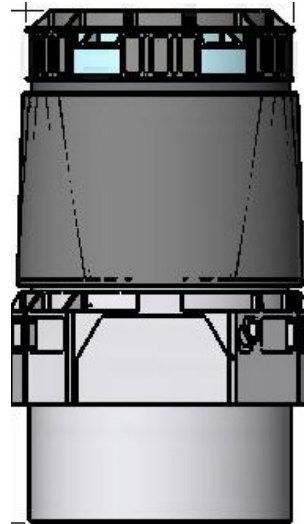
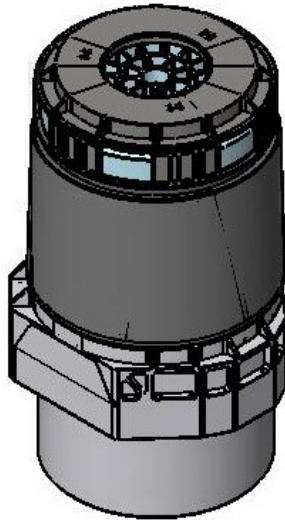


INTEGRATED SCANNER, DETECTOR, AND TELESCOPE (ISDT™)

H I G H L Y C O M P A C T L I D A R A R C H I T E C T U R E



LITE CYCLES, INC.

2301 N. Forbes Blvd.
Ste. 111
Tucson, AZ 85745
Phone: 520-798-0668
Fax: 520-798-0667
E-mail: info@litecycles.com

LCI's ISDT™ architecture is a departure from conventional LIDAR system integration practice, which has focused on linear combinations of scan mirrors, telescopes, cameras, and electronics. The receiver performance and compaction achieved by LCI's ISDT™ architecture enable the design of LDIAR systems for manned airborne and UAV deployment. The ISDT™ features a GUI-programmable scan pattern and tightly couples all receiver components and electronics:

- 3D camera
- Range-gated ICMOS camera
- Rangefinder
- Camera control and signal processing electronics
- Large-aperture optics required for generating high detection SNR
- Other passive and active sensors can also be integrated into the system